



18 May 2016

## Our Vacancy

St Andrew's is at an important and exciting time in its hundred year history. There is much that has been achieved, but an enthusiasm to do much, much more! We have a vision for the future and are looking for a vicar who will teach us, challenge us and work with us to help make our vision a reality in the coming years. We want St Andrew's to be the hub of our community and also to reach out to share the love of Christ through word and action. Our vicar will help us to grow as disciples who share God's love with the people we meet and make a real difference.

## St Andrew's: Who we are

Established a hundred years ago, St Andrew's is a broadly evangelical church that also upholds and respects its traditional roots. We are the only church in our village, and offer a variety of worship services and activities to provide for all ages. Our focus is to reach out and serve our whole community through the love of Christ.



St Andrew's is a busy, friendly community, with a range of services, events and activities, both on Sundays and during the week. Our mission is to share the love of Jesus Christ with residents and visitors, and to bring people to faith in Him.

We are a single church family with a strong and loyal group of committed Christian followers, many of whom have come to faith at St Andrew's. We value the diversity of this family and recognise their different needs. This is reflected in our current varied pattern of worship, which ranges from traditional worship to modern praise services.

We are a prayerful Church, blessed with a leadership team who want to make things happen and make a difference.

*Our Parish Profile is best read on screen –  
click the links to find out more about Oxshott and St Andrew's.*



## St Andrew's: Our Team

To support and assist our new Vicar we have an established team.

*Associate Minister:* Revd Mary-Beth Hawrish

*Licensed Lay Ministers:* Phillip Herbert (with PTO) and David Crouch

*Churchwardens:* Phillip Herbert and Norman Steven

*Assistant Churchwardens:* Ruth Burns and Mike Newman

*Occasional Preachers and Worship Leaders:* Jill Mengham,

Karen Banks and Chris Banks (who is also our Worship Band leader)

*Youth and Children's Pastor:* Josey Wisdom (full-time employee)

*Parish Administrator:* Sue Rees (part-time employee)

*Parish Secretary:* Tamar Berry (part-time employee)

*Director of Music:* Val Beynon



## St Andrew's: Our Vision

### Our Vision

**A vibrant, growing and united Church, reaching out to proclaim the gospel of Jesus Christ**

**WORSHIP** - Providing for all of the community: the committed, the enquiring, the unchurched.

**MISSION** - Reaching out and spreading the gospel of Jesus Christ, making a welcoming church where anyone can feel at home.

**TEACHING** - Helping people to take the first steps, deepen their faith and mature into teachers.

**UNITY** - Serving God as one; celebrating diverse worship while all striving for a common goal.

**SOCIAL ACTION** - Responding with Christian love to the needs of both the community and the world.

As part of an ambitious project to take us through our centenary in 2012, St Andrew's developed and implemented a new [vision](#) and a new way of working together. This helped us modernise the way the church worked in the community and prepared us for embarking on our major [building project](#), Phase 1 of which was completed in 2014. After prayerful discussion and consultation we decided upon:

### **St Andrew's - Your Church**

as a short statement of intent and a challenge to Oxshott. We did not want it just to be talk – so we literally put that message over the door.

Our vision was of a vibrant, growing and united church, reaching out to proclaim the gospel of Jesus Christ. The work was focused in five streams, each led by a different member of the church family – Worship, Mission, Teaching, Unity and Social Action. We also set up groups to improve our Prayer, Stewardship, Communications and Organisational Competency to help achieve these goals.



We have achieved a lot so far but still have so much more to do:

**Worship** – we offer traditional and modern worship every Sunday and a wide range of worship opportunities during the week. Our challenge remains to build on these congregations.

**Mission** – a number of initiatives have included more active welcoming, guest services and engaging with village activities. The first stage of our building project has also helped make the church more flexible and attractive to newcomers. However we have not been growing in recent years, and still have around 120-150 regular worshippers out of 6,000 Oxshott residents. We commit to a significant programme of outgiving every year and £23,000 was spent in outward giving in 2015.

**Teaching** – we have seven home groups, themed courses of Bible teaching, focussed youth teaching through our full-time Youth and Children's Pastor and *Alpha* and *Christianity Explored* courses.

**Unity** – we built a strong network for all the church groups centred round a Ministry Team that binds together members from different backgrounds or traditions.

**Social Action** – we are working hard to address the needs of people in Oxshott but crucial facilities such as our kitchen remain unfit for purpose and require urgent attention. In addition we sometimes lack the human resources to carry out our many initiatives.

As well as being a very active church, we try to be prayer focussed. We have developed and strengthened the prayer life of St Andrew's to enable us to maintain that focus and discern God's way towards fulfilling each of these goals.

## Oxshott: The Place

Oxshott is a well-known commuter village, within the Diocese of Guildford, in the Surrey green belt south-west of London with a [35 minute rail](#) connection to Waterloo. Described in some surveys as one of the most desirable places to live in the country, it is home to a range of ordinary and extraordinary people. The talent, experience and sheer energy that can be found in this village is an asset to the community and its church. Whilst the closed gates of the large houses can present something of a barrier, many residents take a full role in village life so that the church, schools, clubs and organisations are vibrant and successful.



Oxshott Heath

Located amid pine woods and heathland, with easy access to the A3 and M25, Oxshott has grown from an isolated farming hamlet to a thriving community of about 6,600. In 1820, the Duchess of Kent laid the foundation stone of the Royal Kent primary school and in 1885 the railway brought wealthy residents to a village with development initially restricted by the Crown to large houses and mansions. Following the First World War the village grew rapidly and is still a popular site for housing redevelopment. Although known for its rich residents and mansions, Oxshott also has some areas of real deprivation and need and the [Cobham Area Foodbank](#) is actively supported by St Andrew's.



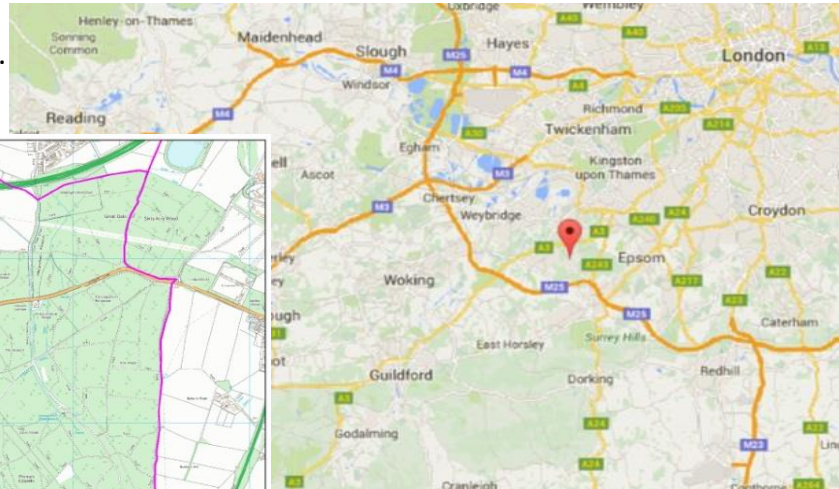
Close to the City and between Heathrow and Gatwick airports, Oxshott is popular with business people working in London, many of whom travel internationally. The 20-minute train ride to Guildford provides easy access to a number of successful secondary schools and there are limited [bus connections](#) to Leatherhead, Epsom and Kingston-upon-Thames (as well as a [Chatterbus](#) to Cobham). Most roads are busy during the rush hour and school run, but fairly quiet at other times.



Steels Lane and Oakshade Road  
near the church

## Where to find us

By [Google Maps](#) or the [Diocesan website](#).  
[Directions to St Andrew's Church](#).



Oxshott is 20 miles from Central London  
and 14 miles from Guildford, with easy  
access to the A3 and M25

Since 2012 the village has become popular with cyclists taking the Olympic cycle route to Box Hill. The sandy hills and trees of [Oxshott Heath](#) are within easy walking distance of the church, the vicarage and the High Street. [Prince's Coverts](#), part of the Crown Estate, are nearby and there are open fields (and a [Scout campsite](#)) between Oxshott and Stoke d'Abernon with its ancient [St Mary's Church](#). So, almost uniquely for a village so close to London, we are surrounded by beautiful countryside.

The High Street (part of the busy A244 between Esher and Leatherhead) is at the top of the hill with a post office, petrol station, butcher, pharmacy, [French café](#), shops, salons and estate agents. There are two pubs: the [Bear](#) in the Leatherhead Road is a comfortable gastropub and the [Victoria](#) on the High Street has just become a White Brasserie; we also have a new small Italian restaurant, [Bella Luna](#).



Oxshott High Street

The second focal point is around the church. The [St Andrew's Pre-School](#), based in the church hall, is an integral part of the life of the parish. Opposite the church, the [Oxshott Village Centre](#) comprises a large and small hall and is also home to the [Oxshott Medical Practice](#). Across the road, the Oxshott Club is a meeting place for locals that also houses a small [gym](#).



The Oxshott Village Centre and Medical Centre



The Oxshott Club

The local primary school, the [Royal Kent School](#), is located nearby, in Oakshade Road, and Oxshott also has a large prep school, [Danes Hill School](#) (with its pre-prep school, Bevendean, opposite the Vicarage) and [Reed's School](#) on the far side of the Heath, an independent boys' school with a co-educational sixth form. The [Oxshott Village Sports Club](#) in Steels Lane offers tennis, cricket, squash and bowls, and in the woods behind it the [1st Oxshott Scout](#) and Guide hut is thriving with scouting and guiding activities for young people and a toddlers' nursery during the day.

In the nearby town of Leatherhead is [St John's School](#) which offers a Foundation bursary to children of Anglican clergy, and nearby state secondary schools [Therfield](#), [St Andrew's Catholic School](#) and [Howard of Effingham](#) are highly regarded.

### Oxshott key stats

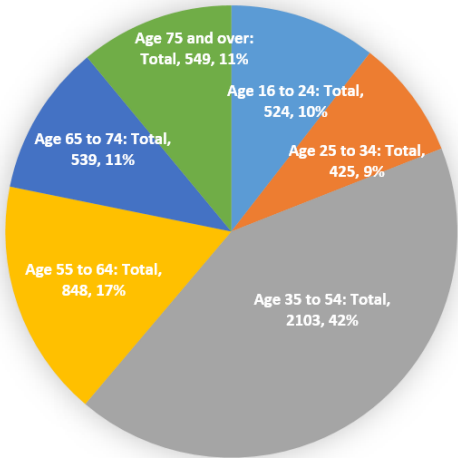
All Residents:	6,615
Number of households:	2,422
Average household size:	2.70

66% residents claim to be Christian

90% live in houses (vs flats or other)

29% households with children

Of Residents over 16, 60% between 35 and 64 years old







Oxshott can be a great place to live and worship, while presenting opportunities for mission and outreach. It has tremendous resources. This is a busy village with a mixed population of families, expats, business people and the active retired. It is a popular place to live, albeit high house prices do present a real challenge to many.

Blundel Lane, Oxshott

## Oxshott Church: The Bricks and Mortar

[St Andrew's](#) began at the turn of the 20th century as a church plant within the parish of [St Mary's](#), Stoke d'Abernon. A temporary church, erected in 1904, rapidly became too small and in 1909 a project was launched to replace it with a building intended to seat 500 and to be built in two stages.

Only the first stage was completed - a sanctuary, chancel, side chapel, vestry and two bays of the nave, with a seating capacity of 260. The church was consecrated in March 1912 and the new parish of St Andrew's Oxshott was established in 1913.

In 1970 new facilities were built including the vestibule, church hall, offices and toilets, with a new west end wall and rose window. The vestibule offers additional seating for 80 for school services, Easter and Christmas.



In 2014 a £575,000 [building project](#) transformed the interior into a fully flexible worship and meeting space. The church retains its previous charm - keeping the original oak altar, rails, stalls and reredos but adding specially designed mobile choir stalls, a nave altar and lectern as well as replacing pews with comfortable chairs. The new lighting, flooring, sound and organ provide excellent and adaptable facilities for worship, prayer, meetings, concerts, dinners and other church functions.

Phase 2 - the crucial modernisation of offices, vestibule, kitchen and hall, and the building of a new children's facility for Junior Church and the Pre-School - is being actively planned, and fundraising has begun. It is hoped that, with the new vicar's leadership, work on this will commence in 2017.



Outside the church building is a car park, a well-kept Garden of Remembrance to the south and a small nursery playground and garden between the church and a side gate to the vicarage.



## The Vicarage

The delightful period vicarage is located next door to the church on Steels Lane. Local estate agents [Boyce Thornton](#), have given us their description of the property, which is due to be refitted and redecorated during the vacancy:

*The Vicarage is approached via a gravel driveway with parking for several cars, benefitting from the natural screening provided by its mature tree and shrub boundaries to the front and rear. The property itself provides a generous reception hall with large kitchen / breakfast room and four further reception rooms. The first floor comprises four bedrooms and two bathrooms and there is a detached single garage.*



There is a pleasant study in the vicarage (as well as working space at the church in the parish office and small meeting room).

The vicarage garden has provided a wonderful venue for parish garden parties.





## St Andrew's: Sunday Services

At 8am we have a said service of Holy Communion or a Service of the Word. A small, but constant and devout, congregation join together in a reflective act of worship to start the day. At this service we use the liturgy of Common Worship Order One in Traditional Language, although once a month Order 2 is used. Both the president and the chalice assistant robe for the Communion service (we have a full set of stoles and chasubles).

Our 9.30am service follows a traditional style, with hymns led by our choir and impressive new organ. The format is a Parish Communion (or once a month Morning Prayer) using Common Worship Order One. These services are printed in booklets and vary in detail according to the liturgical seasons. We have two sets of hymn books and pew bibles for those who like to follow the readings. The liturgy is partly said and partly sung.



9.30am Parish Communion

After the two congregations have shared coffee and fellowship, Oxshott Praise starts at 11.15am.

This is an informal service of contemporary worship. It is popular with young and old and led by a worship band with the words of the praise songs and the rest of the service shown on screens. There is a children's talk, video or drama before the children go out to Junior Church.



11.15am Oxshott Praise

The third Sunday service is an Oxshott Praise Communion. Communion is celebrated and distributed from our new nave altar during this service. The president robes, but not the assistants. Communion is distributed in front of the altar at the chancel steps and communicants remain standing to receive it.

The 11.15am service is projected using audio visual technology by a member of our sound team from our new digital sound mixing desk.

Our readings and sermon or talk are the same at both the 9.30am and 11.15am services. Teaching at all services (Bible based teaching, usually following a [broad theme](#) across a number of weeks) is given by our clergy, lay ministers or one of the worship leaders (or an occasional guest speaker). All talks are available online to listen to again.

Regular attendance at the two later services is roughly equal and the different styles of worship are equally important to us. We want to grow all services and seek an inspirational leader who can build these congregations – drawing the many visitors to the church during the week into a pattern of regular Sunday worship.

At Christmas and Easter and during the summer holiday season the 9.30 and 11.15am services are combined as a single 10am All Age Communion or Praise Service, designed to bring the whole community together. The music is led either by our worship band or organ and choir (and sometimes a combination of both).

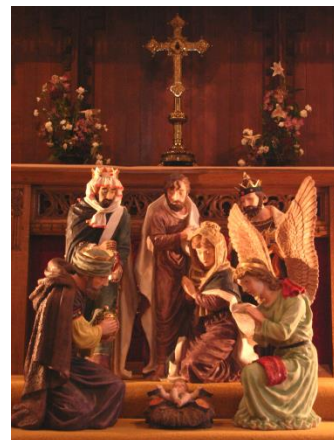


Little angels at our popular crib service

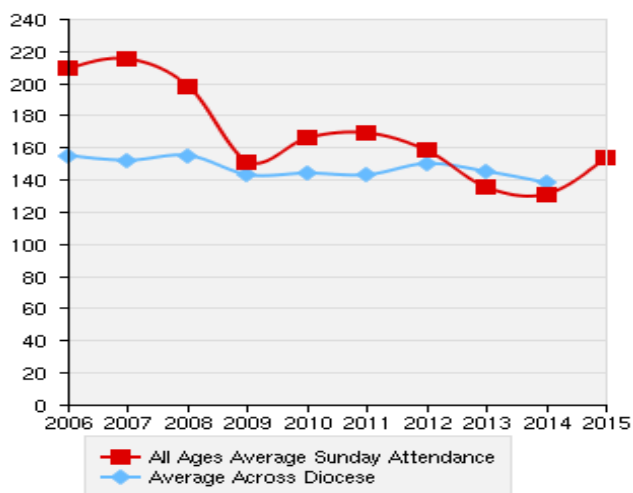
## Our weekly attendance: some statistics

Average attendances at services and other events are: 15 for 8am Sunday worship, 60 at 9.30am, 70 at 11.15am Oxshott Praise (including about 20 children), 12-15 members of Encounter or Quest, 10-15 children and parents at Kids Alive 325 and 5-10 at Wednesday morning communion.

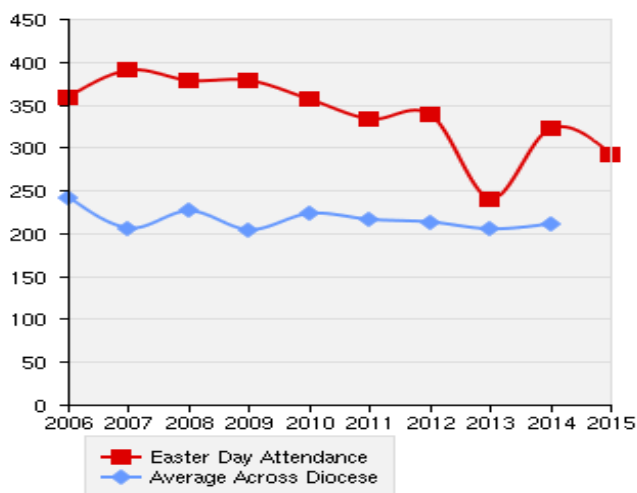
School services for Royal Kent and Bevendean fill the church (the last Scout St George's Day service had over 480 packed in) and we regularly seat 350 on Christmas Eve for the Crib Service, 150 at midnight and 200 on Christmas morning. Dramas at Christmas and Easter attract about 80, and Easter Day sees well over 250 coming to Parish Communion.



All Ages Sunday Attendance



Easter Day Attendance





Over the past few years there have been on average ten baptisms, five weddings and ten funerals or burials of ashes each year.

We have also hosted general election hustings, quiz nights and harvest suppers, film nights and visiting choirs, as well as the very popular concerts of the Oxshott Choral Society.



A wedding in 2014

## Oxshott: A Week in the Life of St Andrew's

As the active, loving body of Christ, St Andrew's holds many activities beyond Sunday worship. Our church remains open in the daytime and we often find people come in for personal prayer or just to enjoy the peace of our Lady Chapel. But we also hold many organised activities and provide a welcome space in our vestibule for friends to meet and chat over coffee. Whilst not a typical week, the following gives a 'snapshot' of parish activities taking place on a weekly or monthly basis:

**It starts with Sunday :** The day begins with the bell ringing for the reflective 8am service. Then Lay Assistants arrive to set up for the 9.30am service and the [choir](#) dress in their robes while the organist warms up. By the time this service has finished, the vestibule is already busy with coffee (and sometimes cakes and pastries) being served for both arriving and departing congregations. The [worship band](#) arrives for Oxshott Praise for 11.15am, where traditional hymns and liturgy are replaced by praise songs and videos – although the [sermon/talk](#) is the same for both services. After the children's talk during Oxshott Praise, all the young people go out into [Junior Church](#). Older children and teenagers meet on Sunday evenings at a local home for Encounter (10-14) or Quest (14-18).

Every weekday morning, volunteers open [Coffee Corner](#) and the staff of [St Andrew's Pre-School](#) set up the children's activities and play areas in the church hall. After parents drop off pupils at the [Royal Kent School](#), they often meet for a coffee at the tables in the vestibule, with access to the church library and the notices on the display screen.

The Parish Office is open every weekday morning and the church remains open throughout the day.

The [Bereavement Support Group](#) may meet for prayers in the Lady Chapel or the church chairs may be cleared for the monthly [In Touch](#) group, as parents and babies arrive for play and fellowship. The display mural in the vestibule is regularly updated by members of the Mission committee with the latest [Outward Giving](#) project – the new medical centre in Owerri, Nigeria or the work of our mission partners in Tanzania. The St Andrew's [Craft Club](#) meets on a Monday afternoon in the vestibule or the hall.



Our parish office is open daily

On a Tuesday morning, the Ministry team and staff hold Morning Prayer in the parish office. The [Mothers' Union](#) meets monthly on a Tuesday, either in the afternoon or for an evening film night in the church.

On Wednesday morning a small group gather for Holy Communion at 10am in the Lady Chapel followed by coffee; Order Two liturgy is used and this service has a small but loyal congregation. Twice a month at midday the church hall is set up for the [Lunch Club](#) for our older residents who live alone. After school on Wednesdays the Lady Chapel is transformed once again by our Children's Pastor and volunteers who run [Kids Alive 325](#) with fun worship for parents and children - puppets, videos, crafts and noisy songs. Between September and June the joyful singing of the [Oxshott Choral Society](#) rehearsal fills the building during Wednesday evenings.

On Thursday morning a small group of church actors dressed in biblical garb visit the [Royal Kent School](#) (or, once a term, [Danes Hill School](#)) to present 'Open the Book' in a school assembly. [Compline](#) is celebrated at 5.30pm every Thursday and once a month there is a [prayer meeting](#) in the Lady Chapel. These might be followed by an evening meeting of the PCC.

On Friday morning one of the [Bible Study groups](#) begins their study in a local home, while the Pastoral group discuss how to provide ongoing practical and spiritual support to those who need care. In the evening the church choir meet for their weekly rehearsal and then the Youth and Children's Pastor and her team set up the vestibule and hall for [OY!](#) our youth club. A crowd of local pre-teens and teenagers, most not from church families, arrive at 8pm for games, craft and chat until 9.30pm.

As the cleaners leave on Saturday morning, the half hour [Prayers for the Parish](#) kicks off at 8.30am. Coffee Corner has a day off and the hall is busy with [Centre Stage](#), a local performing arts school with children acting and singing, while the church is quieter, just visited by people from the [flower rota](#) finishing off arrangements for the next day. Two or three times a year, the activity shifts to a local pub where a visiting speaker is invited to share his or her Christian message at the [Men's](#) or [Women's Breakfast](#). In the evening, the worship band meets, reads scripture together, prays, practises and prepares for the Sunday service.



One of our Home Groups



A Men's Breakfast



## Oxshott: Events in 2015

In addition to our regular weekly or monthly activities, there are some bigger events in the [church calendar](#) and going on in Oxshott generally. Here are some examples of activities last year:

- January : saw a [Men's Breakfast](#) and an [Alpha](#) Dinner
- February: a MU@8 film night
- March: the Esher Scouts Cross Country race, a Women's Breakfast, an MU Pilgrimage of Prayer, an Easter play and a [Good Friday Meditation](#)
- April: an Election Hustings. Our collectors had a busy [Christian Aid](#) week
- May: a Parish [Quiet Weekend](#) away; while the [Oxshott Village Day](#) drew thousands
- June: the annual Oxshott '[Songs of Praise](#)' event
- August: the [Ride London – Surrey Classic](#) cycle race on the Olympic route
- September: the Church versus the Village Club cricket match
- October: the [St Andrew's Autumn Fair](#), a [Harvest Supper](#) or lunch, a service at Gunter's Mead sheltered housing and a quiet [Memorial and Comfort Service](#)
- November: [Remembrance](#) Sunday in church and at the War Memorial on the Heath, a Quiz Night and a [PCC Away Day](#)
- December: Christmas Carol services for four schools, the [Oxshott Choral Society Christmas concert](#), a [Gift Service](#), [Nine Lessons and Carols](#), a Christmas drama, a huge [Crib Service](#), Midnight and Christmas Morning Communions

## Communications

Communications are a critical part of achieving our vision. We have extensive news and what's on pages on our [website](#) as well as producing a monthly [parish magazine](#) that contains news, events and articles on church and village life. It has a monthly print run of 750. Our Christmas edition is distributed free to every house in the village – over 2,200 copies.

## Children and Youth

We run a busy programme of child-friendly worship, clubs and events – headed up by our Youth and Children's Pastor Josey Wisdom, with a team of helpers and experienced leaders. Our young people are a great asset to the church as individuals and a group and also represent the future. We strive to give them a good grounding in their beliefs as they are encouraged on their journey of faith and explore for themselves what Christianity is. From toddlers at [In Touch](#), through [Junior Church](#) and [Kids Alive 325](#) to teenage groups such as [Encounter](#), [Quest](#) and [OY!](#), we provide activities for all ages.



Josey Wisdom has been our Youth and Children's Pastor since 2009

## St Andrew's: Facts and Figures

St Andrew's Church, Oakshade Road, Oxshott, Surrey, KT22 0LE. Reg. Charity: 1128379.  
01372 842071 [www.standrewsoxshott.org.uk](http://www.standrewsoxshott.org.uk)

[Leatherhead Deanery](#), [Diocese of Guildford](#) (see the [Guildford Diocesan Vision](#)).

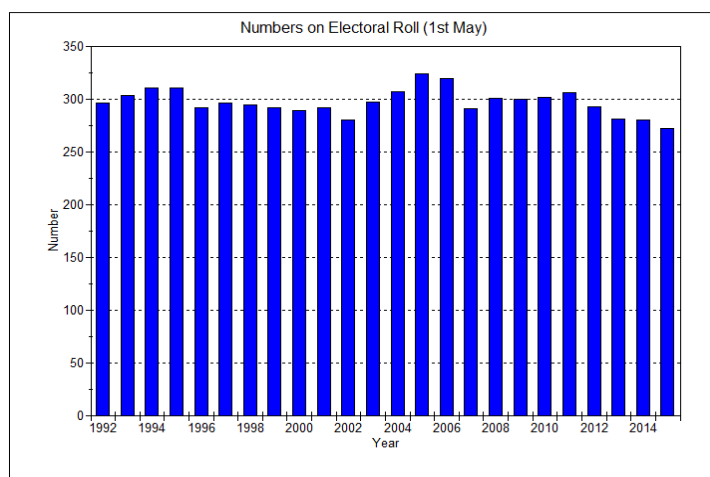
Patron: the Bishop of Guildford

In 2015 St Andrew's raised income of £231,764 from planned giving, gifts, collections, hall fees and magazine subscriptions for our general expenditure. We spent exactly that on our Parish Share (£97,327), church expenses (£28,906), Youth and Children's Pastor (£26,300), outward giving (£23,320) and other costs. At the year end we had about £100,000 in the development fund and £65,700 in the general fund (held as reserves for normal running costs).

We raised over £450,000 for the building project, within about 18 months mainly during 2014, so that it was completed on time and on budget. We have an annual stewardship drive for St Andrew's Day and ask all members of the church family to review their planned giving.

The Parochial Church Council has 21 members (usually on 3 year terms), meets five times a year and operates through various sub-committees.

The number on the electoral roll (*right*) has recently fallen to about 265 members, although the extended church family is wider and weekly footfall is much higher.



## Ecumenical Links

We are part of an active [Churches Together](#) group across Cobham, Oxshott, Stoke d'Abernon and the surrounding areas, working to bring the good news of Jesus into everyone's lives and communities. Each church has its own character and approach to worship, but we share details of church events and calendar dates. Every other [Lent](#) we form ecumenical house groups to study together using a common study guide.

## Schools

The PCC appoints two governors to the Governing Body of the [Royal Kent School](#) and the vicar is also usually a governor. We have very close links with RKS – including engagement with their spiritual committee and RE co-ordinator, supporting Christian content during weekly assemblies (including '[Open the Book](#)') and offering whole-school church services every term.

There are also some links with [Danes Hill School](#) and [Reed's School](#), supporting their Christian Union and offering occasional assemblies, while Bevendean, the pre-preparatory arm of Danes Hill, has termly school services in the church.



# Our Statement of Needs: What we think God wants for St Andrew's

## Our challenges and opportunities

We are a welcoming, friendly and energetic congregation with a busy programme of activities and a strong sense of mission. However the church is currently only engaged with a relatively small proportion of the population; the key challenge is how best to harness the energy of the congregation and lead it to reach out and grow.

In particular:

- where best to focus our efforts in the coming years
- how to build on our relative strengths in work with children, young families, and older people
- how to develop links with working people and in particular the financially successful and high achievers who are now a considerable part of the parish's population
- how to increase our contact with teenagers and young adults
- how we can individually and collectively be better equipped and more effective in the community around us
- the execution of the next phase of our building project

Our vicar will teach us, challenge us and work with us to make our vision a reality and help us to grow as disciples who share God's love with the people we meet.

## Our resources

We are blessed with a strong Ministry Team who are committed and work well together. We have a large group of talented lay people taking a wide range of leading and supporting roles in the life of the church. There is enthusiasm among the members of the PCC to work with a new incumbent to meet the challenges outlined above. The congregation has a desire to see the work of the church grow and has responded generously to requests to support church initiatives. They have given their time and money for the work they believe God wants us to do here.

- Over £500,000 was needed to refurbish our worship space and the vast majority of this was contributed by members of the congregation, in less than a year. The refurbishment project itself was managed by members of the congregation and delivered on time and on budget. This project massively increased the usability, flexibility and comfort of our church space.

**Whilst we can rise to the challenge, keeping our annual budget balanced with enough to fulfil our outward giving commitments has been difficult in recent years**



# The leadership we need

To teach us, challenge us and work with us to focus our plans and help us to grow as disciples of Christ, we are praying for a new Vicar who will:

- Show us what it means to love God, imitate Christ and be a mission-focused church
- Be Spirit-led and teach the Word faithfully, helping us apply it to our daily lives
- Help us grow in discipleship and obedience to Jesus Christ
- Build upon our Sunday worship and Junior Church to reach more members of our community, especially families
- Harness our enthusiasm, motivate and enable us to use our talents to the full
- Work with our Youth and Children's Pastor to further expand our energetic programmes for children and youth into our community
- Help us to break down the psychological and social barriers and attract new believers as we spread the gospel of Christ through all of our ministry: pastoral, fellowship, teaching, occasional offices and mission outreach
- Provide leadership and encouragement to achieve the objectives of Phase 2 of our Building Project
- Help us to respond with Christian love to the needs of the both the community and the world
- Help us set clear priorities for our resources (people and money)

## Skills

We also pray that he or she will be:

- A confident and effective communicator
- At ease working with people of all ages, backgrounds and cultures both inside and outside the Church (sensitive to the diverse nature of our church, committed to our shared unity in purpose, willing to roll up his or her sleeves and work with us in reaching out to the community)
- A team leader who can help us set priorities

